

# BOTSWANA DIAMONDS PLC

Corporate Presentation – June 2024



The company drilling kimberlite in the central Kalahari of Botswana



# DISCLAIMER

---

This document is personal to the recipient and has been prepared and issued by Botswana Diamonds plc (the **Company**) For the purposes of this notice, the presentation that follows (the **Presentation**) shall mean and include the slides that follow, the oral presentation of the slides by the Company, the question-and-answer session that follows that presentation, hard copies of this document and any materials distributed at, or in connection with, that presentation.

This Presentation has not been independently verified. The Presentation is for information purposes only and does not purport to contain all information that a prospective investor may require. No reliance may be placed for any purposes whatsoever on the information contained in this Presentation or on its completeness, accuracy or fairness. No representation or warranty, express or implied, is given by or on behalf of the Company or any of such persons' directors, officers, advisers, agents or employees or any other person as to the accuracy or completeness of the information or opinions contained in this Presentation and, to the extent permitted by law, no liability whatsoever (in negligence or otherwise) is accepted by the Company, or any of such persons' directors, officers, advisers, agents or employees or any other person for any loss, howsoever arising, directly or indirectly, from any use of such information or opinions or otherwise arising in connection therewith. In particular, no representation or warranty is given as to the achievement or reasonableness of, and no reliance should be placed on any projections, targets, estimates or forecasts contained in this Presentation and nothing in this Presentation is or should be relied on as a promise or representation as to the future. The information and opinions set out herein may be subject to updating, completion, revision, verification and amendment and such information may change materially. In furnishing this Presentation, the Company does not undertake any obligation to provide any additional information or to update or keep current the information in this Presentation or to correct any inaccuracies in, or omissions from, this Presentation which may become apparent.

This Presentation should not be considered as the giving of investment advice by the Company or any of its shareholders, directors, officers, agents, employees or advisors. Each party to whom this Presentation is made available must make its own independent assessment of the Company after making such investigations and taking such advice as may be deemed necessary.

Some statements contained in this Presentation or in documents referred to in it are or may be "forward-looking statements" or "forward-looking information" (as such terms are understood under applicable securities laws) (**forward-looking statements**), including, but not limited to, statements as to future operating results, work plans and potential acquisitions and contracts. The forward-looking statements include statements typically containing the words "intends", "expects", "anticipates", "targets", "plans", "estimates" and words of similar import. These forward-looking statements speak only as at the date of this Presentation. These statements are based on current expectations and beliefs and, by their nature, are subject to a number of known and unknown risks, uncertainties and assumptions that could cause actual results, performances and achievements of the Company and its subsidiaries to differ. The forward-looking statements are based on numerous assumptions regarding the Company's present and future business, strategies and interests and the environments in which the Company may operate in the future and such assumptions may or may not prove to be correct. No one undertakes to update or revise such forward-looking statements. Nothing in this Presentation or in documents referred to in it should be considered as a profit forecast. All expressions of opinion and belief contained in the Presentation are opinions and beliefs held by the Company at the date of the Presentation. Material factors that could affect the Company's future results and could cause results to differ materially from those expressed in any forward-looking statements in this Presentation can be found in the Company's 2014 annual report, available at <http://www.botswanadiamonds.co.uk/res/file/BotswanaAR2012.pdf>.

Accordingly, recipients of this Presentation are advised not to place undue reliance on the forward-looking statements contained in this Presentation.

Past performance cannot be relied on as a guide to future performance.

This Presentation does not constitute, or form part of or contain any offer or invitation to sell or issue, or any offer to subscribe for, underwrite or otherwise acquire, or dispose of, any securities in the Company in any jurisdiction in which such offer or sale would be unlawful prior to registration, exemption from registration or qualification under the securities laws of any jurisdiction.

This Presentation is directed at, and is only for distribution to, persons in member states of the European Economic Area who are "qualified investors" within the meaning of Article 2(1)(e) of the European Prospectus Directive 2003/71/EC (or who are persons to whom it may otherwise be lawfully communicated). No offer of securities in the Company is being or will be made in the United Kingdom in circumstances which would require such a prospectus to be prepared.

This Presentation is intended for distribution in the United Kingdom only to: (i) persons who have professional experience in matters relating to investments falling within Article 19(5) of the Financial Services and Markets Act 2000 (Financial Promotion) Order 2005 (the Order); or (ii) persons falling within Article 49(2)(a) to (d) of the Order (high net worth companies, unincorporated associations etc) or to those persons to whom it can otherwise lawfully be distributed (all such persons together being referred to as Relevant Persons). This Presentation must not be acted upon by persons who are not Relevant Persons. Any recipient of this Presentation who is not a Relevant Person should return it immediately, not attend the presentation and take no other action.

The distribution of this Presentation in jurisdictions other than the United Kingdom may be restricted by law and persons into whose possession this document comes should inform themselves about, and observe, any restrictions. In particular, neither this Presentation nor any copy of it may be taken or transmitted or distributed or redistributed (directly or indirectly) in the United States, Japan or Australia. Any failure to comply with this restriction may constitute a violation of United States, Japanese or Australian laws.



# BOTSWANA DIAMONDS PLC

## Focused diamond exploration company

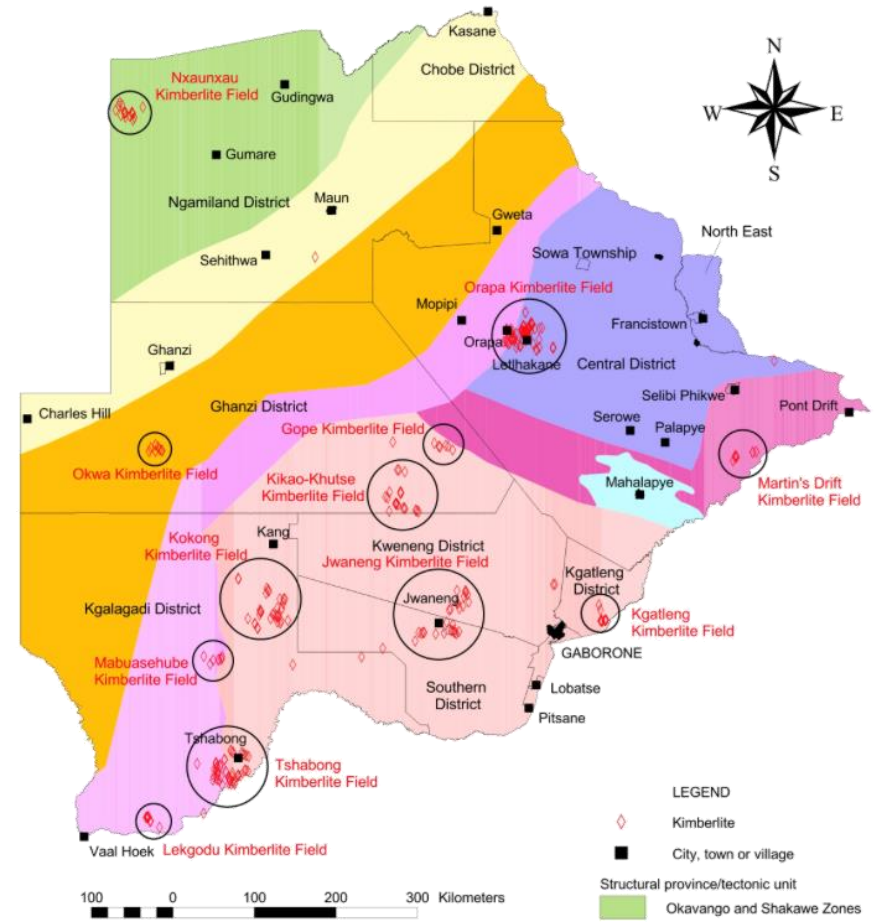
<b>Listing</b>	Diamond explorer listed in London & Botswana <b>(AIM: BOD, BSE: BOD)</b>
<b>DIAMONDS</b>	The long-term prognosis for natural diamonds remains good, despite a short-term dip in diamond prices chiefly caused by the global high inflationary environment and negative impact caused by the growth of Lab Grown Diamonds "(LGD)".
<b>MISSION</b>	<b>Deliver capital gains</b> through being a <b>diamond explorer</b> . We acquire ground, refine opportunities and then joint venture.
<b>STRATEGY</b>	<b>Exploration:</b> in the Kalahari of Botswana, South Africa & Zimbabwe <b>Deal potential:</b> projects in the Kalahari, the kernel of a new production base. <b>Production:</b> Marsfontein and shortly Thorny River in South Africa.
<b>BEST ADDRESS</b>	<b>Botswana:</b> <i>'The Switzerland of Africa'</i> . <b>South Africa:</b> under explored but with strong infrastructure. <b>Zimbabwe:</b> under explored, open for business.
<b>EXPERIENCED MANAGEMENT</b>	Steeped in exploration and mining, proven <b>value creators</b> .
<b>FINANCE</b> <i>Risk sharing</i>	Minimise dilution by <b>joint venture</b> , by bringing early-stage exploration to a stage where it can be <b>commercialised</b> .
<b>TECHNOLOGY</b>	Unlock value through extensive <b>technical</b> and <b>exploration experience</b> .



# DIAMONDS IN THE KALAHARI

## The last frontier

- ◆ Diamond bearing kimberlites are still waiting to be discovered!
- ◆ **Recent ground gravity work close to KX36 has identified two large anomalies which are drill ready.**
- ◆ Potential to consolidate other projects with Ghaghoo and become the **next major diamond producing area in Botswana.**
- ◆ BOD strategy aligned to the **aspirations of the Government of the Republic of Botswana.**



References: Brook 2012 on 11IKC website; De Wit, May 2023

# THE DIAMOND MARKET

## Industry fundamentals

All producers sold better volumes in H1 2024 after the Indian import ban in Q4

- ◆ But 2024 has seen continued weakness in diamond pricing.
- ◆ Liquidity in the cutting centres remains healthy for now though.
- ◆ There are signs that Lab Grown Diamonds may be weakening as prices keep falling.
- ◆ An increase in natural diamond marketing is required.
- ◆ Continued market anxiety about the future of De Beers, as industry leader.
- ◆ However, **BOD is a longer-term play.** A significant discovery will take years to come on stream and 3 billion people will become middle-class in the next 2 decades and aspire to buy diamonds!

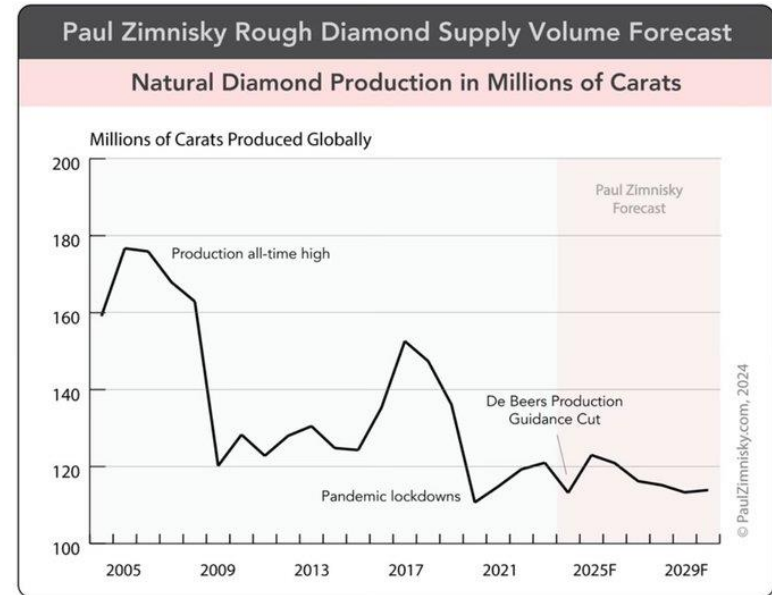
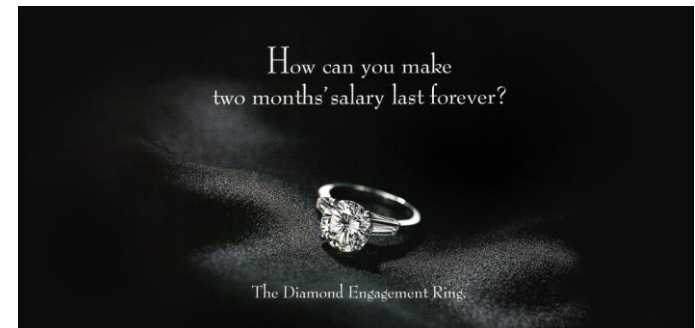


Chart care of Paul Zimnisky. Please consider subscribing to: <https://www.paulzimnisky.com/products> .



# PRODUCTION

## Marsfontein

- ◆ **Over 1,500 carats** recovered from the Marsfontein dumps to date. Operations are currently on care and maintenance due to fall in market prices and rise in costs.
- ◆ Eurafrican Diamond Corporation Pty Ltd ('EDC') who operate the Schuller Mine are the royalty miner with no operating costs or capital outlay to BOD.
- ◆ BOD earns **15% of run-of mine production** and **25% of special stones** with no operating and capital costs outlay.
- ◆ A **kimberlite blow** of 5-10 metres wide and c.13 metres from surface has been discovered. Further exploration work is required to determine the volume and grade. **Potential for immediate production.**
- ◆ Marsfontein operations used successfully as a **Proof-of-Concept for Thorny River.**



Diamonds from Marsfontein



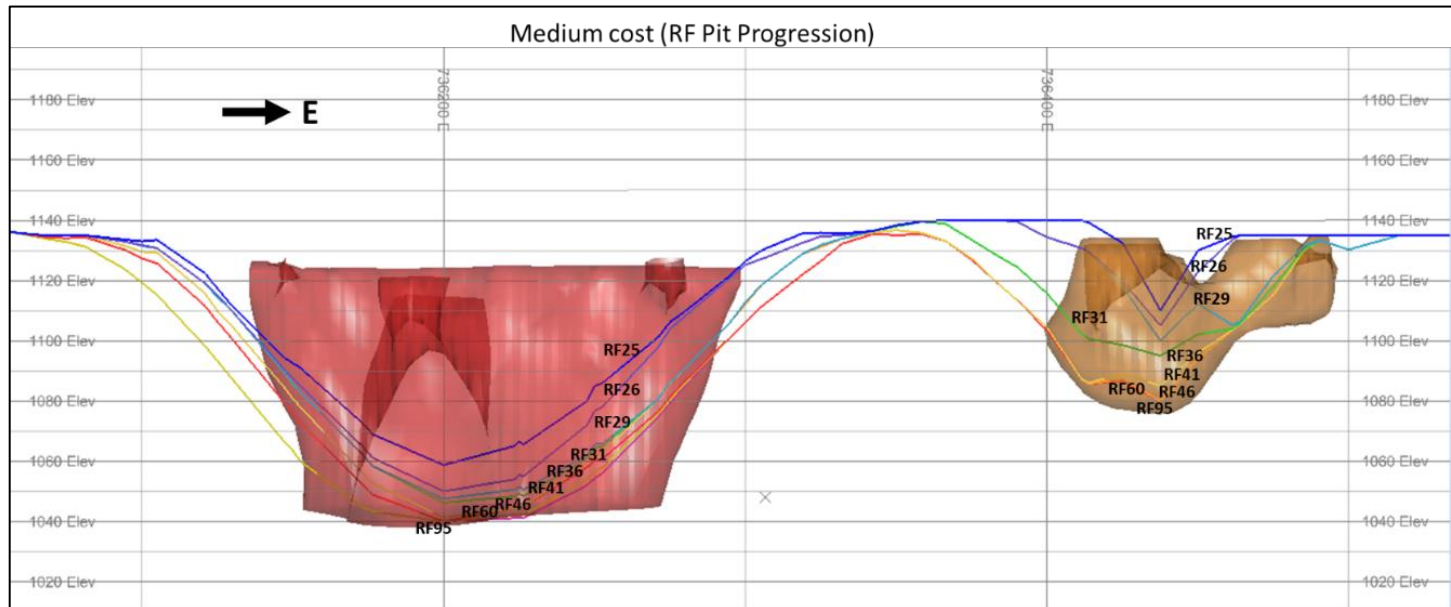
Mining on Marsfontein



# IMMINENT PRODUCTION

## Thorny River

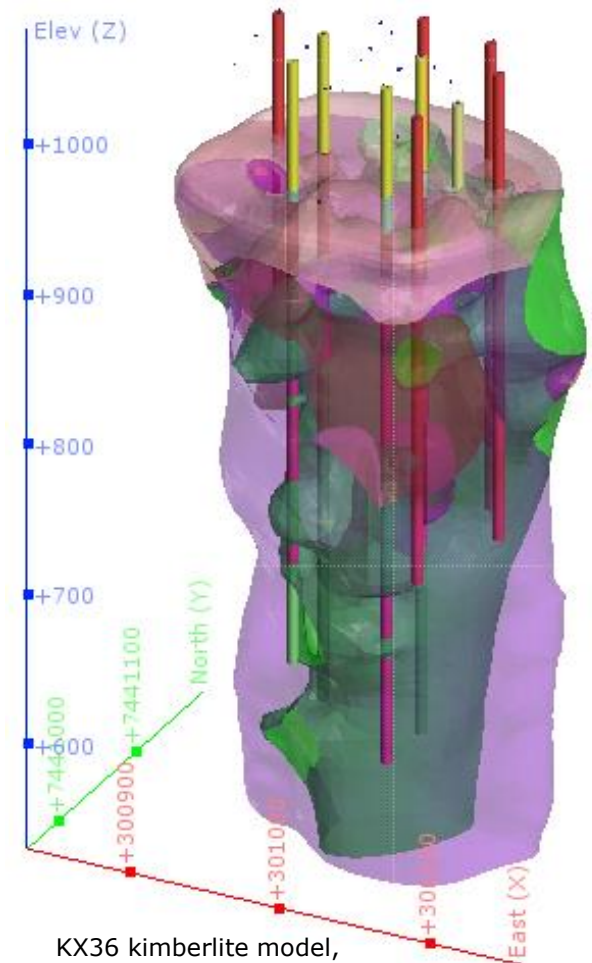
- ◆ **Mining Permits** have been Accepted on **Thorny River**.
- ◆ Granting (ie. **issuing approval**) is expected during the course of Q3 2024 following extensive country-wide delays in 2023.
- ◆ Once granted, diamond prices are expected to be improved and the cost of diesel (a critical cost factor) has already started to drop which should allow **operations to start**.
- ◆ SA operations designed to cover costs and are unlikely to be company makers.



# ADVANCED EXPLORATION

KX36 is the most significant diamond discovery since the Orapa and Jwaneng clusters

- ◆ KX36 is a **3.5 Ha kimberlite** in the Kalahari of Botswana and is 60-km from Ghaghoo.
- ◆ The pipe has **Resources of 17.9MT at 35 cpht (Indicated)** and 6.7MT at 36 cpht (Inferred) at \$65/ct. The modelled grade range is 57–76 cpht at a modelled diamond value upside to \$107/ct\*.
- ◆ KX36 has an in-situ **bulk sampling plant** including crushing, screening, scrubbing, Dense Media Separation and X-Ray recovery.
- ◆ This is a single, isolated kimberlite. Kimberlites occur in clusters. Thus, **significant exploration potential.**



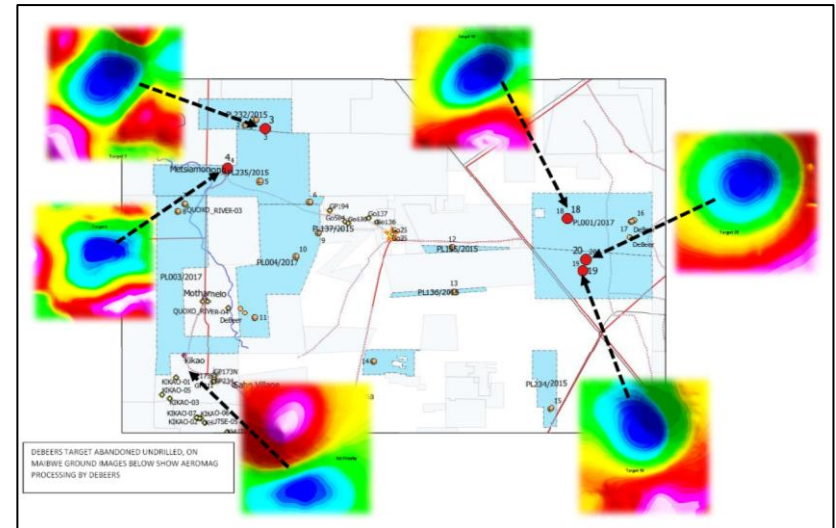
KX36 kimberlite model,  
Image: Petra Diamonds Ltd



# EXPLORATION

## Sunland & Sekaka

- ◆ BOD holds extensive **prime acreage** in the Kalahari of **Botswana** with licenses held by Sunland Minerals Pty Ltd, Sekaka Diamonds Pty Ltd and in the Maibwe joint venture.
- ◆ **Several geophysical and geochemical anomalies** have been discovered on the company's licenses.
- ◆ Recent detailed ground gravity results on Sekaka ground close to KX36 **are most positive and have produced a drill ready targets of 12-ha and 6-ha.**
- ◆ An Environmental Impact Assessment ("EIA") has been applied for to enable **drilling to take place.**



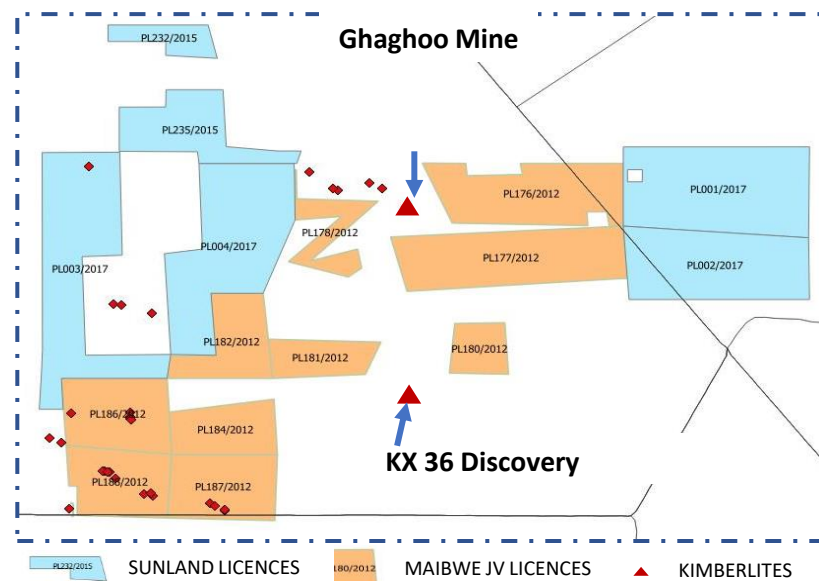
Sunland anomalies



# EXPLORATION

## Maibwe

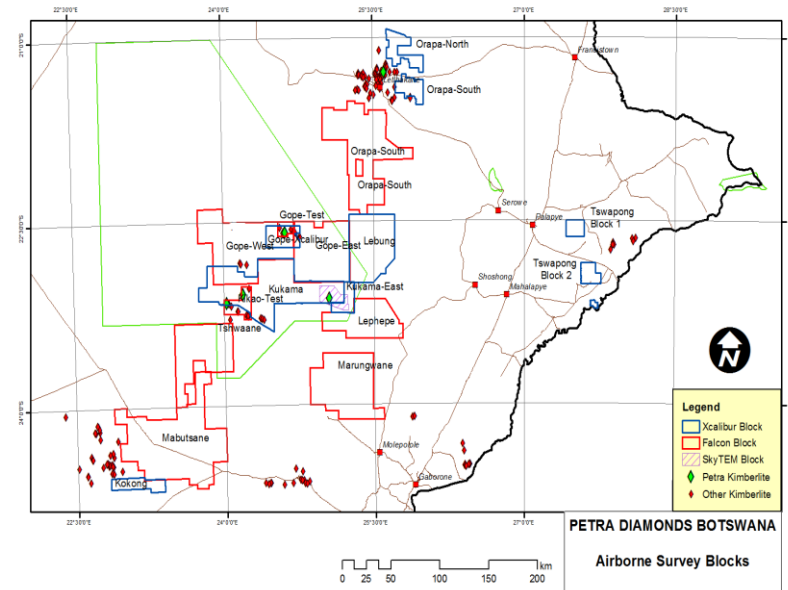
- ◆ Siseko has **increased its stake** in the Maibwe JV in Botswana from 29% to 50% following successful resolution of the corporate impasse.
- ◆ BOD holds a 51.7% stake in Siseko.
  - ◆ A cluster of four diamond bearing kimberlite pipes on PL186 have been discovered, with surface sizes of 5ha, 6ha, 2ha and 1ha respectively. **Significant quantities of microdiamonds have been found in one of these pipes.**
  - ◆ **Drill ready targets.**



# EXPLORATION

## Artificial Intelligence

- ◆ The company has the second largest **exploration database** in Botswana.
- ◆ The company will utilise Planetary AI Ltd Xplore mineral prospectivity technology which was developed in collaboration with International Geoscience Services Limited.
- ◆ The system acts much like a geologist but can function quicker and more efficiently. Vast data-sets are processed through AI that finds logical gaps in the data and learns to correct them. This exercise is expected to yield fresh insights that will offer **drillable targets** previously unseen.
- ◆ Application for both diamonds and **other minerals**.



### Sekaka Database

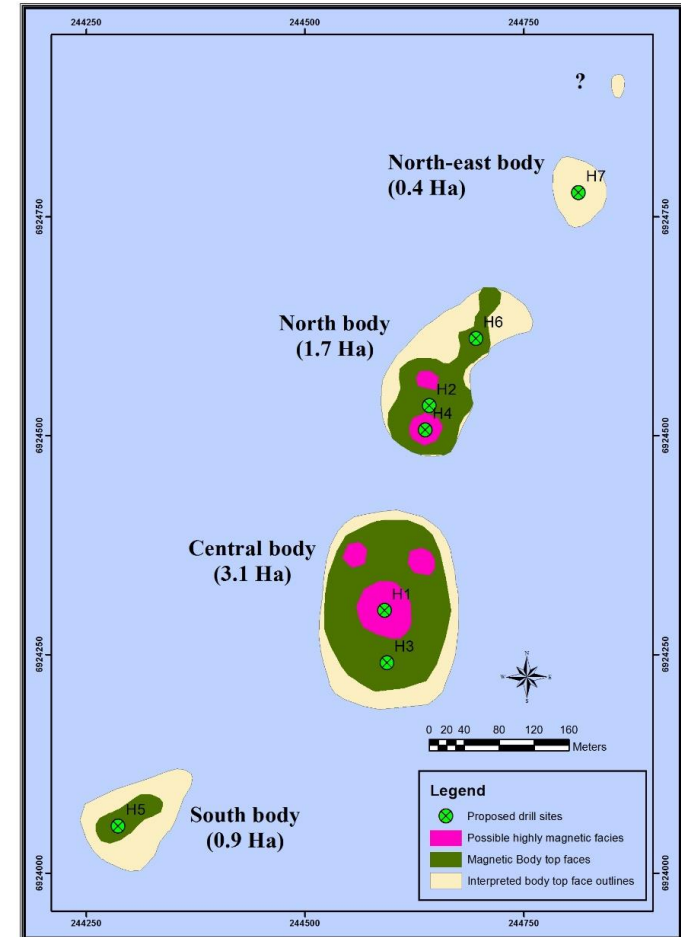
- **c.95,000 sq km of data**
- Airborne geophysical data: c.375,000 line km
- Ground geophysical surveys: 506
- Soil sample results: c.228k
- Drill hole logs: c.32k.



# ADVANCED EXPLORATION

## Reivilo kimberlite pipe cluster

- ◆ The company has been granted a **five-year prospecting licence** on ground containing the Reivilo cluster of kimberlites in South Africa.
  - ◆ A cluster of three kimberlite pipes, with sizes of 3.1ha, 1.7ha and 0.9ha all within a 250-metre radius.
  - ◆ Samples of the drilling core produced G10 and eclogitic garnets which are the optimal indicators for diamondiferous kimberlites.
  - ◆ Samples have been taken for microdiamond analyses to provide a **preliminary grade estimate**.



Reivilo kimberlite cluster  
Image: Petra Diamonds Ltd





# BOTSWANA DIAMONDS PLC

## Experienced management team



John  
Teeling

—  
**Executive  
Chairman**

—  
Founder of a number of listed resource companies, including African Diamonds. Holds a doctorate in business from Harvard Business School as well as an MBA from Wharton.



James  
Campbell

—  
**Managing  
Director**

—  
Over 35-years in the diamond industry. Has been MD of Rockwell Diamonds and African Diamonds. Prior to this was a GM at De Beers. Holds degrees in Mining & Exploration Geology and an MBA.



James  
Finn

—  
**Finance  
Director**

—  
Over 20-years African resource company experience; director of a number of resource and industrial ventures. Holds a degree in business and has an accounting qualification.



David  
Horgan

—  
**Director**

—  
Thirty years exploration experience, 25 years in Africa. Founder director of African Diamonds. Cambridge First in Law & Harvard MBA.



Robert  
Bouquet

—  
**Commercial  
Director**

—  
Antwerp-based Diamond market expert. Over 20-years diamond industry experience; 15 with De Beers/Rio Tinto Diamonds.



# BOTSWANA DIAMONDS PLC

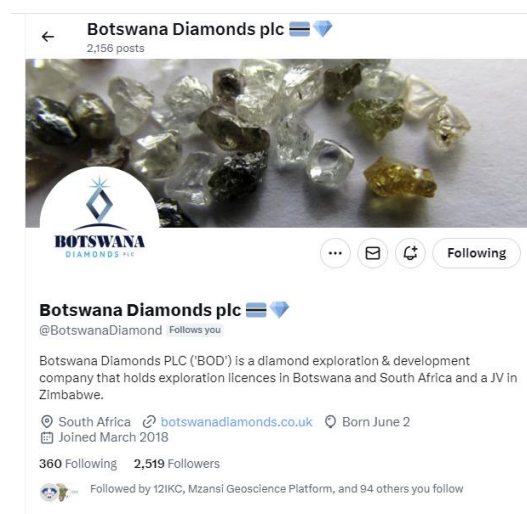
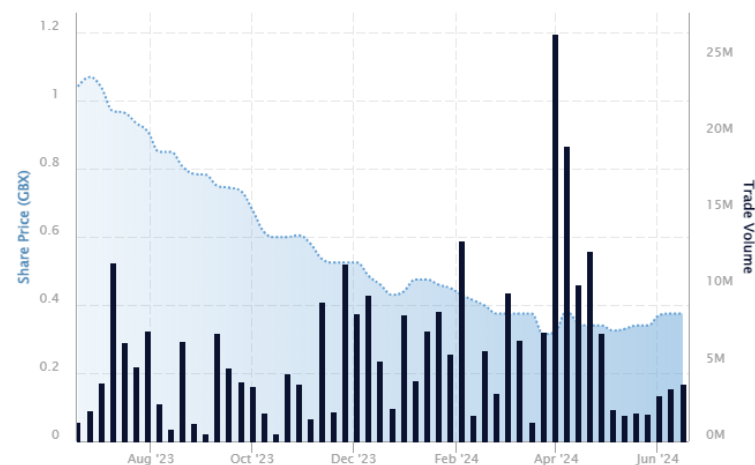
## Corporate information

### Corporate information

Exchanges	<b>AIM (LSE) /BSE</b>
Ticker	<b>BOD</b>
Shares in Issue	1,119 M
Market Cap	<b>£4.20 M</b>
Share Price	<b>0.38 p</b> (21 <sup>st</sup> June 2024)

### Significant shareholders

	<b>% Holding</b>
Pershing International Nom	11.9
Interactive Investor Services Nominees	9.4
John Teeling	5.7
HSBC Global Nominees	5.3
Aurora Nominees	4.9
James Finn	3.5
Hargreaves Lansdown Ltd	3.2
David Horgan	1.4
James Campbell	1.0



### Active social media presence:

<https://twitter.com/BotswanaDiamond>  
<https://www.facebook.com/BotswanaDiamondsPLC/>  
<https://www.linkedin.com/company/botswana-diamonds-plc/>



# **BOTSWANA DIAMONDS PLC**

Corporate Presentation – June 2024



162 Clontarf Road

Clontarf

Dublin 3

Ph: +353 1833 2833

Web: [www.botswanadiamonds.co.uk](http://www.botswanadiamonds.co.uk)

Email: [info@botswanadiamonds.co.uk](mailto:info@botswanadiamonds.co.uk)

Social Media:

<https://twitter.com/BotswanaDiamond>

<https://www.facebook.com/BotswanaDiamondsPLC/>

<https://www.linkedin.com/company/botswana-diamonds-plc/>